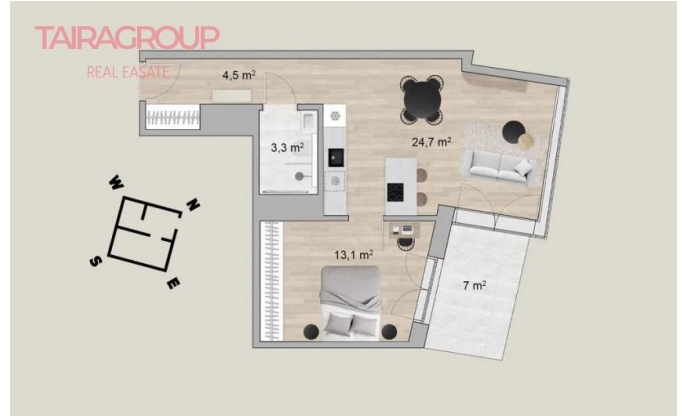




SALE, APARTMENT, 45.6 SQ.M., 2 ROOMS



Price:	263 300 €	Total area:	45.6 m ²
Lot:	100036	Bathrooms:	1
Type of transaction:	Sale	Balconies:	1
Property type:	Apartment	Floor:	4
Location:	POLAND, Małopolskie, Kraków	Renovation:	Idealne
Rooms:	2		

Features:

- ✓ Furnished
- ✓ Kuchnia wyposażona
- ✓ Balkon
- ✓ Winda
- ✓ Łazienka/WC
- ✓ Domofon
- ✓ Ogrzewanie

Description:

We present a new flat in the Wiślane Tarasy 2.0 investment. It is fully furnished and equipped with household appliances, air conditioning and accessories. The functional interior has been designed by an architect and will be finished using high quality materials. The flat is located on the 4th floor in a building completed in 2022.

The price of PLN 1,184,900 includes the finished, ready-to-occupy flat with full furnishings.

BASIC INFORMATION

- Grzegórzecka Street 69B/132 (Grzegórzki)

2 rooms (24.7 sq.m.; 1.5 sq.m.) - 2 rooms (24,7 m²; 13,1 m²)

. - Room height: 269 cm

- Loggia (7 m²)

. - Exposure: north-east

THE SPACE of 45,59 m² is composed of:

- Living room (24,7 m²) with kitchenette equipped with new appliances (fridge, induction hob, oven, dishwasher) and high-quality custom-made furniture. From the living room leads out to the loggia (7 m²).

. - Bedroom (13,1 m²) with double bed and built-in wardrobe.



- Bathroom (3,3 m²) with toilet, washbasin, shower and underfloor heating.

Bathroom. - Corridor (4.5 m²) with spacious built-in wardrobe.

VISLANE TARASY 2.0 INVESTMENT

A corridor (4 5 m²) with a spacious built-in wardrobe.

The Vistula Terraces 2.0 Investment The Vistula Terraces 2.0 investment is a modern architecture of buildings and a whole range of amenities for residents. Here you will find green zones for relaxation, spacious courtyards with unconventionally arranged space and small architecture and a modern playground. Safety is ensured by 24-hour security and monitoring as well as controlled entry zones. The proximity of restaurants, beauty salons, spas, gyms, swimming pools, saunas, kindergartens and crèches are further assets of the investment.

Enthusiasts of walking and outdoor sports will appreciate the proximity of the Vistula Boulevards, the City Beach, the Botanical Garden and many bicycle paths.

. The estate is located near the Grzegórzeckie Roundabout, one of the main transport centres in Kraków. Nearby, there is the Kazimierz Gallery shopping centre at 800 m, and the nearest Variete Theatre is only 200 m away.

. It takes 8 minutes to get to the Main Market Square and Kazimierz. It takes 3 minutes to get to the tram stop.



Photos:

